

TECHNICAL DATA SHEET

LU3X-AC IP20 / Xenon

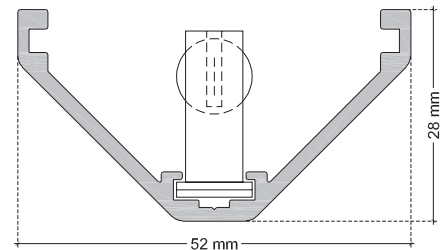
VERSION - 26.04.2016

STANDARD LUMINAIRE

Reference	LU3X-AC			
Protection Class	IP20			
Lighting Source	Xenon			
Connector	Rigid Loop on B'Light conductor 16mm ²			
Dimensions	52 x 28mm			
Standard Length	330 - 670 - 1000 - 1330 - 1670 - 2000mm			
Length on measure	on request up to 3000mm			
Nb Lighting Unit	18 bulbs/m			
Voltage	24V			
Power	3W	5W	8.5W	10W
	54 W/m	90 W/m	153 W/m	180 W/m
Connecting Cable	1m standard cable 2x2.5mm ²			



LU3X-AC / Xenon - Rigid Loop



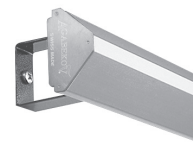
FINISH

Color Finishing Profil

Standard	Natural Anodised Aluminium
On request	Thermo-Enameling Powder Coating RAL Color Anodising Polished Aluminium Chrome Aspect Polished Aluminium Old Gold Aspect

ON REQUEST: LU3X-AC Fixation - **NOT POSSIBLE WITH COVER**

ABA



ABS

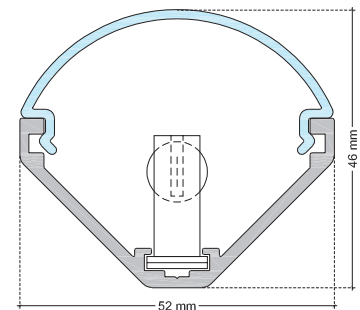


ON REQUEST

Fixation	ABA: Perpendicular Support ABS: 45° upward or downward support
Reflector	RI
Cover	VAS: Clear Glass / VOS: Opaline Glass (Xenon 5W Max.)
End Caps	EPA EPAR (for VAS/VOS Cover)
Connecting Plug	AMS / AF
Dimming Option	Phase 220V, Dali, KNX <i>Ask technical department for more information</i>

ON REQUEST: LU3X-AC Cover **XENON 5W MAX.**

VAS/VOS



LIGHTING SOURCE

Lighting Source	Xenon Long Life			
Glass	Clear or Frosted			
Power	3W	5W	8.5W	10W
Voltage	24V	24V	24V	24V
Beam Angle	360°	360°	360°	360°
Color Temperature	2300K	2400K	2600K	2500K
Light Output lm/unit	12.6lm	40lm	95lm	90lm
Lifetime	20'000h	20'000h	10'000h	20'000h

ON REQUEST: LU3X-AC End Caps

EPA



EPAR for VAS/VOS Cover



CERTIFICAT



ON REQUEST : Connecting Plug AF/AMS

